

# Sunny delight

A couple want to let the warmth and light flood into their south-facing master bedroom during the day, but want the nights to stay cool and dark

Report: Viv Lawes

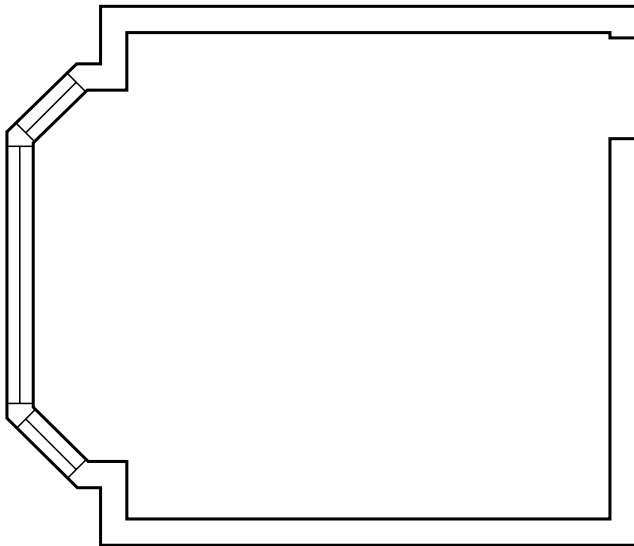
## THE CLIENT

Nigel and Helen Mason, an insurance broker and solicitor, have moved into a large, detached 1930s house in Hertfordshire with their children, Harry, 9, and Charlotte, 7. They have decided to completely refurbish the south-facing master bedroom to take advantage of year-round direct sunlight.

## THE BRIEF

“We’re both real summer people and love having sunshine first thing in the morning,” says Helen. “However, I worry that direct light all day long will ruin the fabrics and furnishings, so I’m trying to find a way of enjoying as much natural light as possible while keeping damage to a minimum.” The couple also want to find a way of keeping the bedroom well ventilated and dark at night. Both like calm, muted colours in their bedroom but enjoy having plenty of pattern and texture in small flourishes. The couple are keeping their existing bed, but would like to replace the plain wooden headboard.

## THE SPACE



The bedroom measures 3.6m squared, added to which is a large bay window with an internal aperture of 2.9m. The ceiling height is a generous 2.54m. The original picture rail and door remains, although the corner fireplace has been boarded up and painted over. All walls and ceiling are in good condition and there is central heating with a radiator on the right-hand wall by the door entrance.

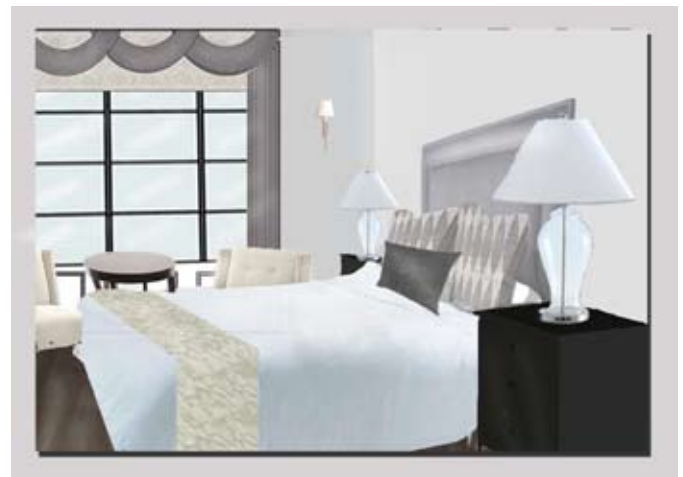
## THE BUDGET

£10,000

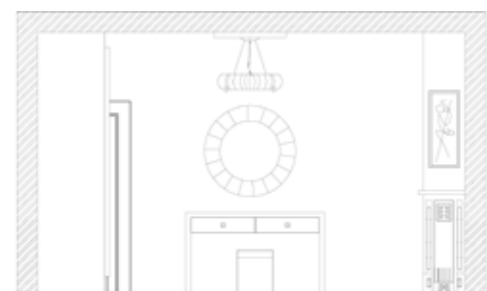
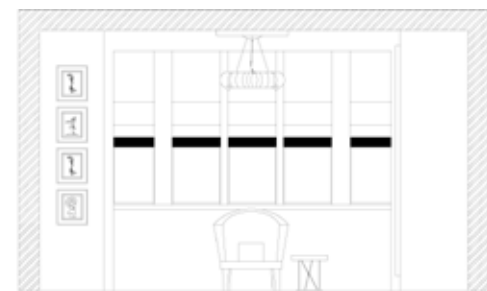
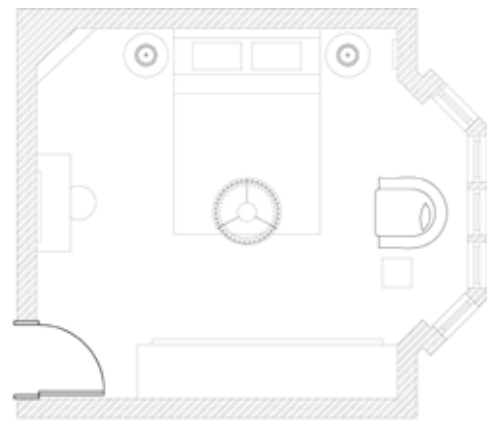
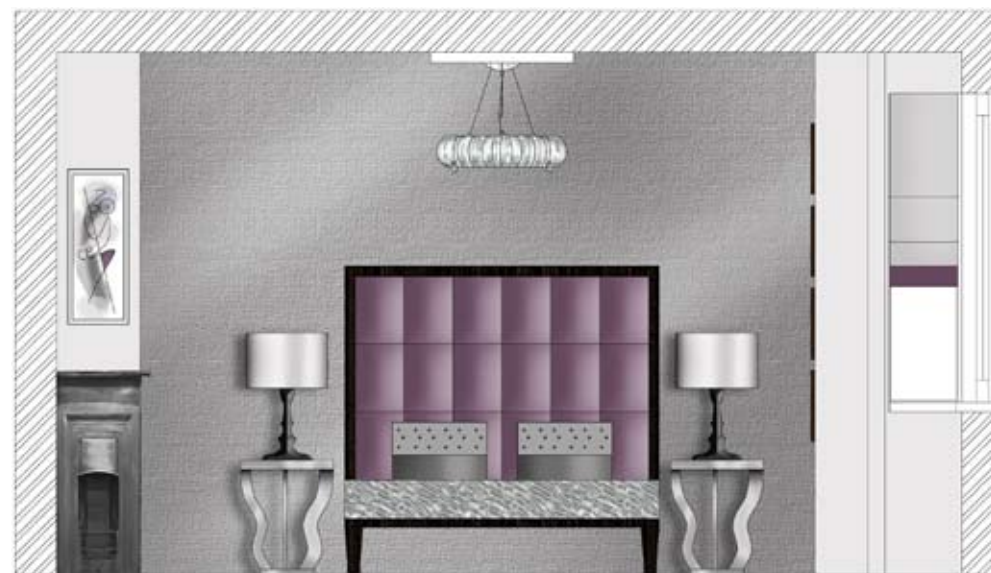
## SOLUTION ONE



## SOLUTION TWO



SOLUTION ONE



CAZ MYERS



Caz Myers recently set up her own interior design practice in North London. She would create a cool haven in a glamorous '30s mix of silver and strong accents of inky purple

"To focus attention on the windows without blocking any of the natural light I decided to use white voile roller blinds to diffuse the light, over which I'd put striking Roman blinds," Caz says. The latter would be made up of Villa Nova Valleta satin in chrome, hemmed with Zinc Orbit in deep purple Lunar Charolite. The Villa Nova fabric is a cotton and polyester mix, which would counteract the damaging effects of the sun better than silk; the blinds would also be lined in a blackout cloth to keep the room cool and dark, especially in the summer months.

The bespoke bed and headboard would be upholstered in Kirkby House Ritz velvet in Blueberry, dramatically set off against a feature wall covered in shimmering grey Abbott & Boyd Glass in faux alligator skin embossed vinyl. The rest of the room would be painted in Paint & Paper Library matt emulsion in Slate 1, with Dulux trade white for the ceilings and woodwork. The room would be carpeted in Smaragd by Lano in granite.

A pair of circular Art Deco-style bedside tables by Graham and Green would have matching Spire table lamps by Heathfield Lighting. The luxury of the bed would be embellished with a pair of cushions covered

with Lelievre's superb Flash silver velvet studded with black sequins, and smaller cushions made up with Abitare's Skins in silver. A faux fur pale grey throw backed in purple silk would complete the look.

The '30s glamour would be augmented by the Clarence Doughnut pendant light by Heal's, and Caz would add Butcher Plasterworks' BCC107 ceiling rose for a period feel. She would place Sweetpea & Willow's Belgravia silver tub chair next to a side table by Bontempi. For practical purposes both the bed upholstery and tub chair would be Scotch Guarded.

On the wall opposite the bay window Caz would open up the corner fireplace and fit an Oxford cast-iron fireplace by Pendragon Fireplaces. The sense of space would be maintained by a simple Elbourne dressing table by Jan Cavelle with gloss lacquer finish, over which she would hang a bespoke circular mirror. She would also supply custom-made lacquered wardrobes with wenge surrounds, leaving space for a flat-screen TV later on.

Caz Myers 07970 723883 or [www.cazmyers.com](http://www.cazmyers.com)

THE SPECIFICATIONS

Window treatments	£1763
Flooring and soft furnishings	£1034
Furniture and joinery	£6466
Lighting	£480
Decorating costs	£989
<b>Total</b>	<b>£10,732</b>

CONTACTS

BONTEMPI +39 0717300032 or [www.bontempi.it](http://www.bontempi.it)  
 GRAHAM AND GREEN 0845 130 6622 or [www.grahamandgreen.co.uk](http://www.grahamandgreen.co.uk)  
 HEAL'S 0870 024 0780 or [www.heals.co.uk](http://www.heals.co.uk)  
 HEATHFIELD LIGHTING 01732 350450 or [www.heathfield.co.uk](http://www.heathfield.co.uk)  
 JAN CAVELLE ELBORNE 01440 704253 or [www.jancavelle.com](http://www.jancavelle.com)  
 LANO CARPETS +32 56654000 or [www.lano.com](http://www.lano.com)  
 PENDRAGON FIREPLACES 01384 444475 or [www.pendragonfireplaces.co.uk](http://www.pendragonfireplaces.co.uk)  
 SWEETPEA & WILLOW 0845 257 2627 or [www.sweetpeaandwillow.com](http://www.sweetpeaandwillow.com)  
 VILLA NOVA 01623 756699 or [www.villanova.co.uk](http://www.villanova.co.uk)

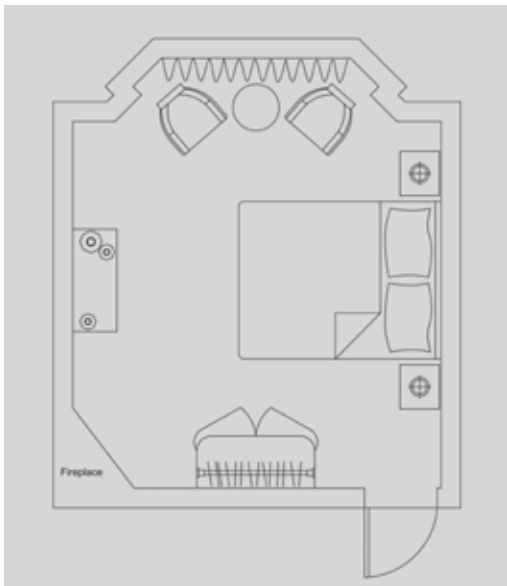
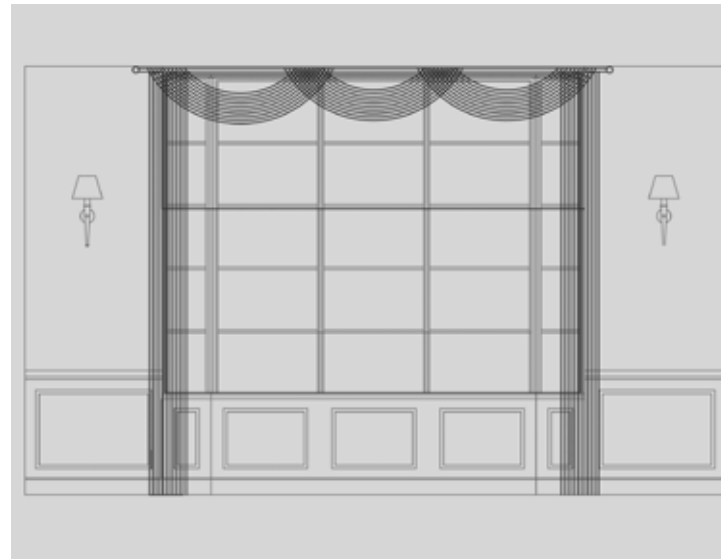
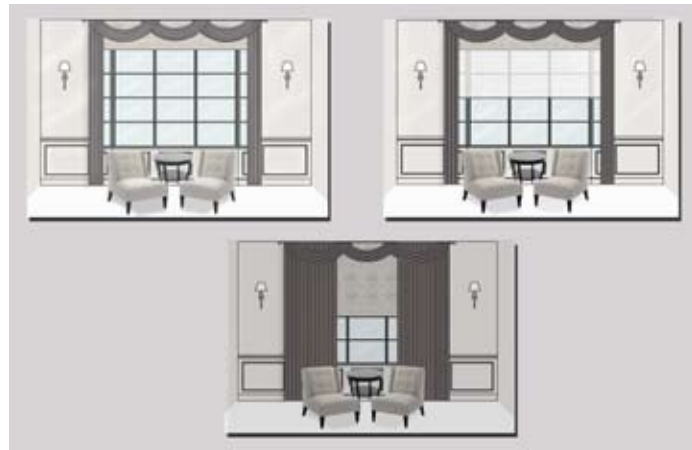
THE VERDICT



Nigel loved this design straight away. "It has a really masculine edge in the colour scheme but it's softened by gentle lines in the side tables and ceiling pendant," he says. Helen was amazed by the effect of the reinstated fireplace, which immediately made the space more sophisticated. "I think Caz has also really answered my concerns over sun damage to the furnishings," she adds, "which she has addressed in a simple, elegant and practical way through the window treatment. She also understands practical issues of having children – I wouldn't have to worry about ruining this room because it's robust as well as beautiful."



SOLUTION TWO



KATHARINE POOLEY



Katharine Pooley opened her boutique in central London in 2004. She would combine cool ivory and greys with subtle patterns and a dramatic contrast of light and dark tones

"I would focus on giving the window area a luxurious look as it is the main feature of the room," says Katharine. She would use three layers for the window treatment, using soft colours to stop it appearing over-fussy. The sheer inner layer, for which she would use Wind Sand in off-white, would prevent direct sunlight from causing the furnishings to fade.

Katharine would then overlay Roman blinds using De Le Cuona's Heritage Pearl HE1, a warm cream/grey opaque wool and cotton mix with subtle shell motifs, which would be given a blackout lining. Used in combination with soft unlined drapes made up in warm grey Sahco Cosmo (2352, colour 21), the room would become completely dark; this would help to keep it cool on a bright sunny morning. The elegant swag across the head of the window treatment and Arras Cone wall lights by Vaughan Designs would complete the glamorous window wall.

"I would also plan seating in the bay area, so that it doubles up as a retreat for time out," Katharine explains. She would include in a pair of Andrew Martin's Triton chairs upholstered in Positano by Westbury Textiles in

Limestone, and place them around a two-tiered circular Monroe table by JVB.

Katharine would revamp the clients' existing bed, adding a vertiginous bespoke headboard covered with sumptuous Westbury Textiles Biarritz pearlescent velvet in pewter (Col. 3). A pair of large bed cushions made up with a silk marquise patterned fabric by Bruno Triplet in White Gold Oyster would be complemented by a second smaller pair in De Le Cuona's Baroque in Anthracite.

Katharine would supply bespoke storage furniture made from chocolate maple with a highly polished finish. Wardrobes would be arranged along the wall opposite the window, while a chest of drawers would face the foot of the bed. Matching side tables with glass table lamps by Andrew Martin, meanwhile, would flank the bed.

The room would be painted throughout in Marstons Premium White Pepper interior finish, with Baked Oak wooden flooring by Natural Wood Floor Company. Wooden dado panelling would complete the scheme.

Katharine Pooley 020 7584 3223 or [www.katharinepooley.com](http://www.katharinepooley.com)

THE SPECIFICATIONS

Window treatments	£2805
Flooring and soft furnishings	£1677
Furniture and joinery	£5750
Lighting	£950
Decorating costs	£500
<b>Total</b>	<b>£11,682</b>

CONTACTS

ALTFIELD 020 7351 5893 or [www.altfield.com](http://www.altfield.com)  
 ANDREW MARTIN 020 7225 5100 or [www.andrewmartin.co.uk](http://www.andrewmartin.co.uk)  
 BRUNO TRIPLET 020 7823 9990 or [www.brunotriplet.com](http://www.brunotriplet.com)  
 DE LE CUONA 020 7584 7677 or [www.delecuona.co.uk](http://www.delecuona.co.uk)  
 JVB 020 7751 4125 or [www.j-v-b.com](http://www.j-v-b.com)  
 NATURAL WOOD FLOORING COMPANY 020 8871 9771 or [www.naturalwoodfloor.co.uk](http://www.naturalwoodfloor.co.uk)  
 SAHCO 020 7352 6168 or [www.sahco.de](http://www.sahco.de)  
 VAUGHAN DESIGNS 020 7349 4600 or [www.vaughandesigns.com](http://www.vaughandesigns.com)  
 WIND +32 56622030 or [www.wind.be](http://www.wind.be)

THE VERDICT



"This is so much more elegant than anything we've ever had," says Helen. "The symmetry really appeals to me, plus I really like the bold headboard and geometric cushion combination," adds Nigel. The couple both loved the window treatment, citing the three layers as being both beautiful and practical – the layers would prevent sun damage but allow light in, while it would provide for complete darkness and also draw attention to the view from the window. They thought Katharine's design was perfectly balanced, with the softness of colours counteracting the classical geometry of the overall design, and the patterns and textures adding depth to the neutrality of the colour scheme.